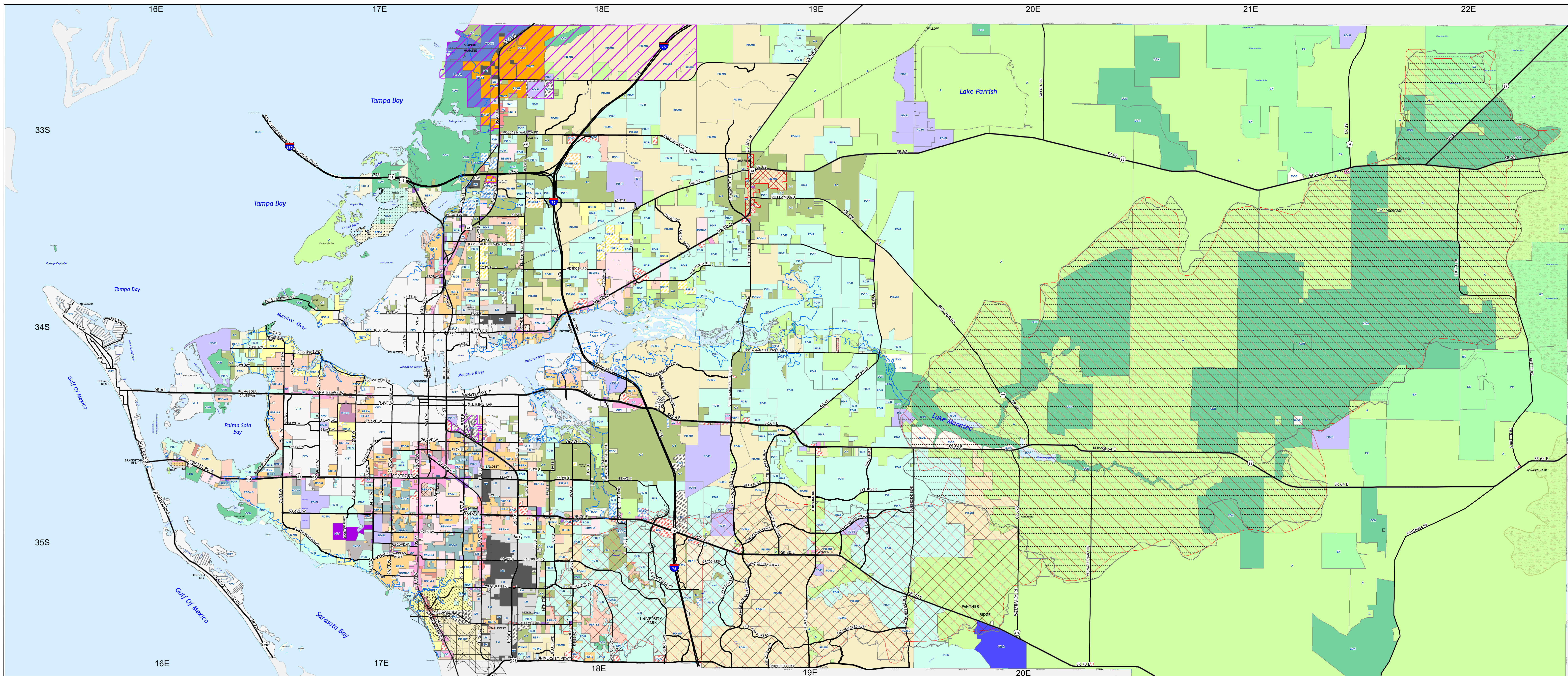


ZONING

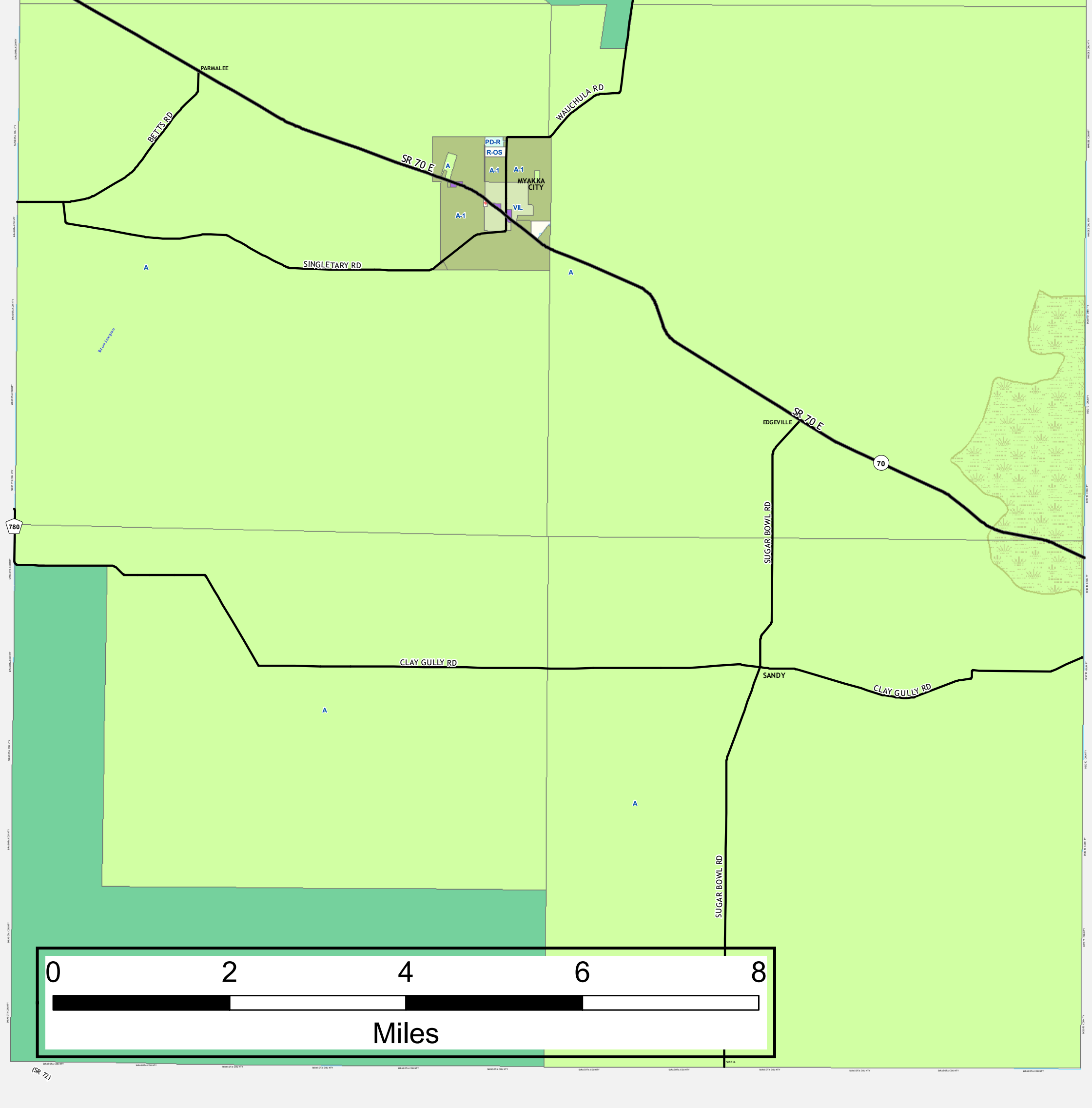
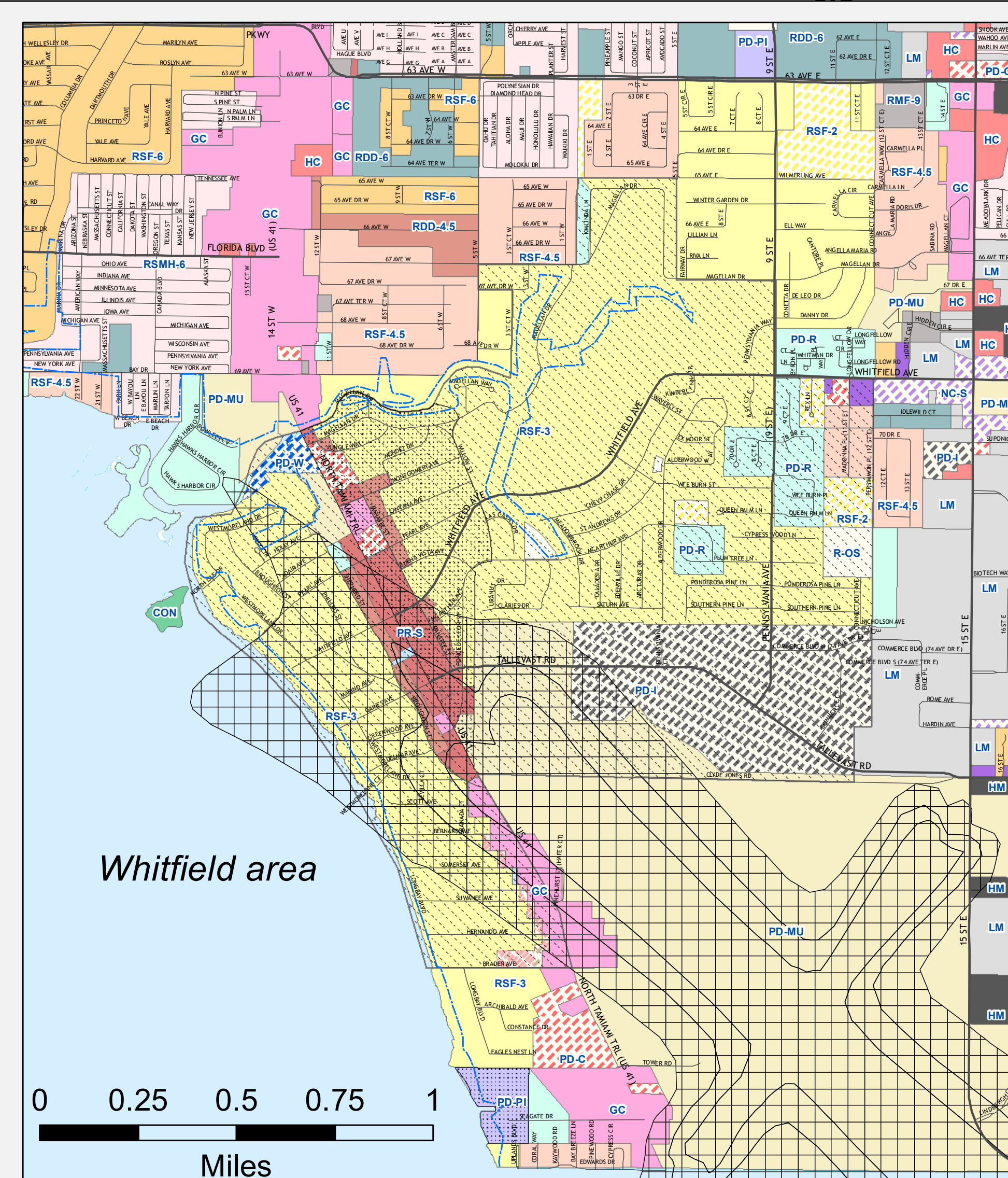


Zoning Districts

A	NC-M	PD-PM	RMF-9
A-1	NC-S	PD-R	RSF-1
CON	PD-A	PD-RV	RSF-2
RVP	PD-C	PD-UI	RSF-3
EX	PD-EZ	PD-W	RSF-4.5
GC	PD-GC	PR-M	RSF-6
HC	PD-I	PR-S	RSMH-4.5
HM	PD-MH	RDD-3	RSMH-6
LM	PD-MU	RDD-4.5	VIL
MP-I	PD-O	RDD-6	CITY
	PD-PI	RMF-6	

Overlay Districts

Parrish Commercial Village
Historical/Archaeological
Manatee Watershed
Evers Watershed
Peace River Watershed
Special Treatment
Whitfield Residential
Recreational Vehicle
Manufacturing Development
Airport Impact
CHH - Zoning

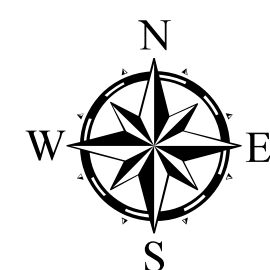


* - SEE ORDINANCE FOR MORE INFO

MAP UPDATED: MARCH 2024



This map was developed by the Manatee County Geographic Information Systems Division. It is provided for general reference and is not warranted in any way. Errors from non-coincidence of features from different sources may exist. The Manatee County BOCC shall be held harmless for inappropriate or unintended uses of the information.



Manatee County, FL